



Across

Across was designed to cut through space, passing through and uniting interiors and exteriors.

With an identical indoor and outdoor material look, Across is ideal for all spaces, no holds barred, giving living room to garden, kitchen to terrace, a uniform look. Across's continuities meld residential spaces into one, cutting through them.

Precise veining and natural intersections cut across the rock decisively, making it even more solid and, at the same time, remaining faithful to the Piasentina stone the collection is inspired by.

Surfaces and sizes

#6mm Soft
120x250 48"x100"
120x120 48"x48"
60x120 24"x48"
Mosaic 1.5x1.5 30x30 12"x12"

#12mm Nat
120x120 48"x48"
60x120 24"x48"
60x60 24"x24"



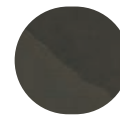
Lattea



Aurea



Nebulosa



Magmatica



Argilla

Terre e Acque

Argilla rediscovers the most natural expressions of the Faentinian lands, the clays, creating a chromatic range with a pastel shade, where the material becomes the main subject. The Dry grey and the Biacca Clear, modern and refined colors, recall the presence of a vein of chalk, determining a cold and rocky trend. Fog brown and Dark brown are presented in warmer tones recalling the more superficial clays. Vetiver and Marine complete the collection with reference to water, the natural compendium of the earth. The two surfaces of the collection, which interpret the same color, underline the plasticity of our raw material: the Quartz surface, material and pasty Material, is almost waxy and very soft.

Surfaces and sizes

≠6mm Material
 120x120 48"x48"
 60x120 24"x48"
 60x60 24"x24"
 Large Pentagon 84x49 33"x19"
 Small Hexagon 18x16 7"x6"
 Large Hexagon 36x31 14"x12"
 Diamond 18x31 7"x12"
 Small Pentagon 17x10 7"x4"
 Brick 9x18 3 1/2"x7"
 Plate 9x30 3 1/2"x12"
 Small 9x9 3 1/2"x3 1/2"
 Mosaic 1.5x1.5 30x30 12"x12"
 Stripes Mosaic 15x120 6"x48"

≠12mm Material
 120x120 48"x48"
 60x120 24"x48"
 60x60 24"x24"
 Large Pentagon 84x49 33"x19"



Biacca



Dry



Vetiver



Marine



Fog



Dark



Aromas

Aromas wants to bring the typical Mediterranean and cozy atmosphere of terracotta floors back to contemporary and minimalist surfaces adapting them for a new home style. Large surfaces with surprising shapes that - thanks to their warm and nice colors - create an original atmosphere. The contemporary reinterpreted Terracottas are the ideal solution for floors and walls; they lend themselves to internal projects that continue outdoors, offering, for the first time, a slab format that complies with all the technical characteristics required for non-slip surfaces. In order to obtain unconventional installations with unusual effects, the range has been enriched by an innovative proposal of non-standard formats. A glossy and playful pattern adds another touch of relish to offer more decorative surfaces, in chromatic continuity, suitable for floors and walls: a precious amazing decoration.

Surfaces and sizes

≠9mm Mat | Soft | Bocciardato
 120x250 48"x100"
 120x120 48"x48"
 60x120 24"x48"
 30x30 12"x12"
 Origami
 Large Pentagon
 Giga Hexagon
 Gem Hexagon
 Tangram

≠21mm Bocciardato
 120x120 48"x48"
 60x120 24"x48"



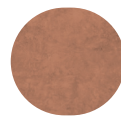
Vanilla



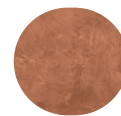
Rosé



Cinnamon



Cocoa



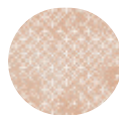
Chili



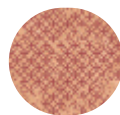
Masala



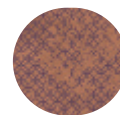
Vanilla&Pink



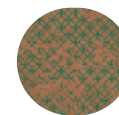
Rosé&Sugar



Cinnamon&Red



Cocoa&Plum



Chili&Green



Bamboo

In the year it presents its collection of terracotta colours, Gigacer emphasizes its territorial and cultural origins, seeking the collaboration of its region artisans to underline the ceramic taste typical of the Faenza famous glazed majolica. The recall to tradition can be found only in the material, leaving maximum expression of shapes and colours to the design. This is how the Bamboo collection was born, to combine the expert know-how of the Faenza ceramists together with the contemporary design that distinguishes all Gigacer's collections. Bamboo is a new range of 15x15 cm three-dimensional glazed terracotta tiles available in 20 colours ideal for wall cladding and interior design.

Surface and size

±10mm
15x15 6"x6"



Bianco
Fresco



Bianco
Fresco



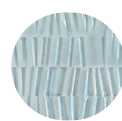
Ivory



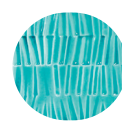
Sabbia



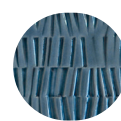
Cotto



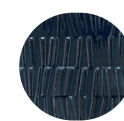
Oceano
Limpido



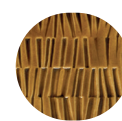
Lago
Intenso



Oceano
Velato



Blue
Reale



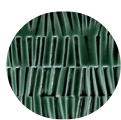
Ambra



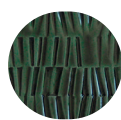
Rio
Limpido



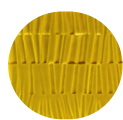
Verde
Oliva



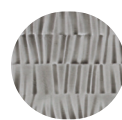
Rio
Velato



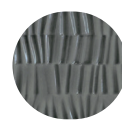
Abisso
Velato



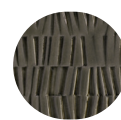
Giallo
Senape



Gray
Stone



Nuvola
Intenso



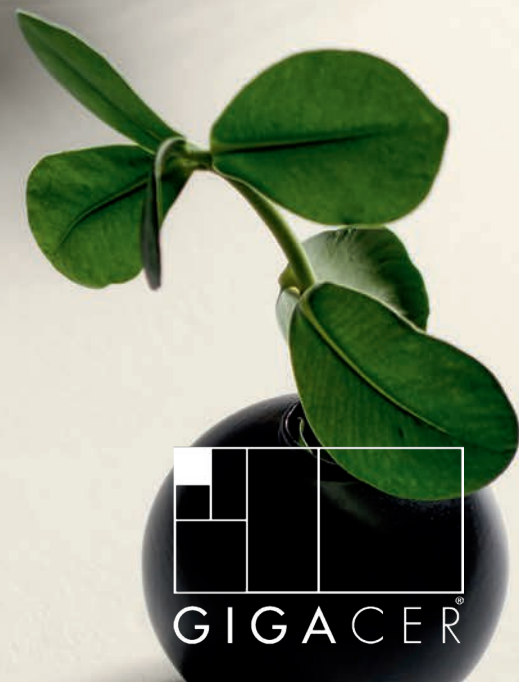
Tortora



Nero



Nero



Béton

Cement in architecture

Taking inspiration from the many buildings designed by Le Corbusier where he used exposed concrete, Gigacer has created Béton Gris and Béton Blanc, neutral ceramic porcelain surfaces which are reminiscent of the minimalist character of the famous Béton Brut. The range is ideal for wall and floor coverings for residential and public use and can be perfectly combined with the Le Corbusier LCS Ceramics colours.

Surfaces and sizes

≠6mm
120x250 48"x100"

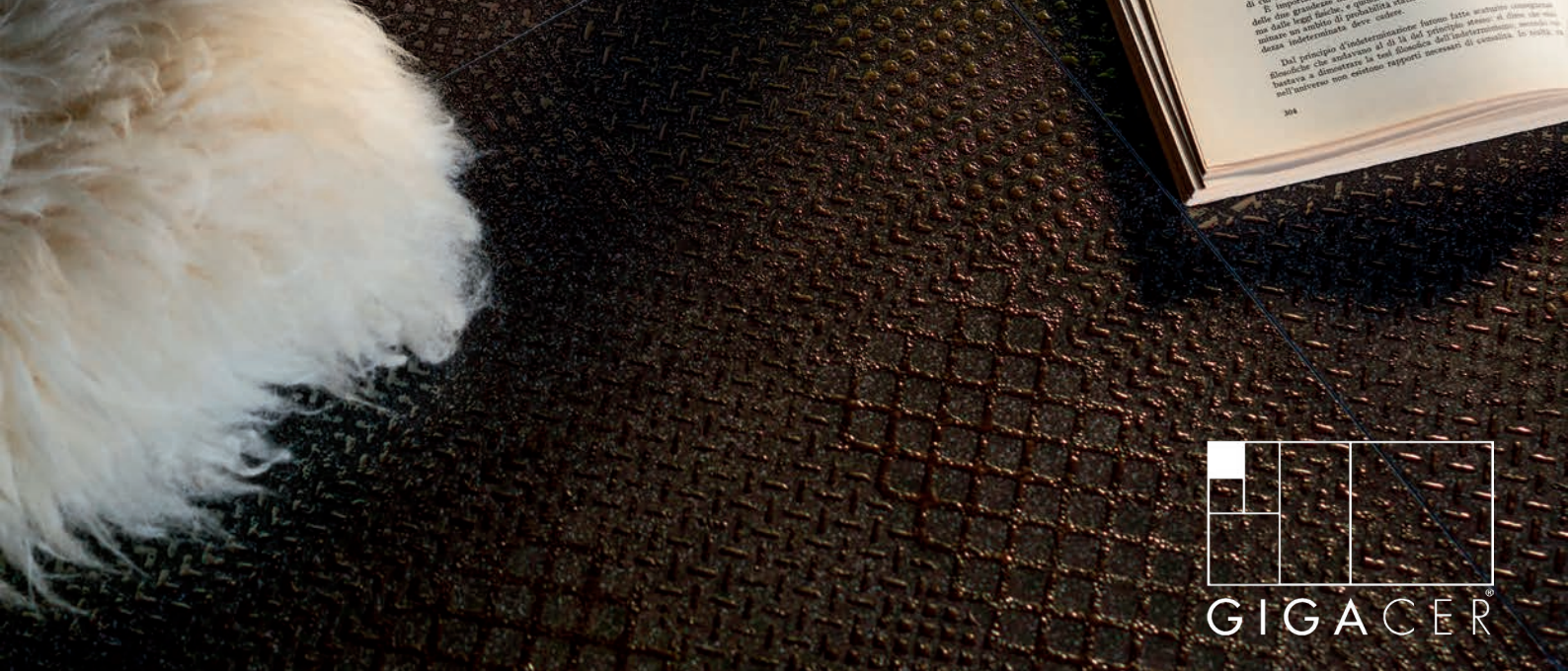
≠12mm
120x120 48"x48"
60x120 24"x48"



Blanc



Gris



Concept 1

All in One

Concept 1 is to conceive space with unity of form and style, using technical solutions that maintain aesthetic continuity through the environments and their multiplicity of uses, indoors, outdoors, on walls and furniture, in short: all in one.

A unique ceramic range designed for every type of application, with a variety of colours and surfaces that can always be combined in an exclusive and personal way.

A resistant, eclectic porcelain stoneware in natural and homogeneous shades, with 5 colours, 5 different surfaces and 3 thicknesses.

Surfaces and sizes

#6mm Mat #6mm Levigato #6mm Texture Mat #6mm Texture Levigato 120x250 48"x100" 120x120 48"x48" 60x120 24"x48" 60x60 24"x24" ◆ 30x60 12"x24"	#12mm Bocciaurato 120x120 48"x48" 60x120 24"x48" 60x60 24"x24" 30x60 12"x24" ◆
Small Hexagon 18x16 7"x6" Large Hexagon 36x31 14"x12" Diamond 18x31 7"x12" Small Pentagon 17x10 7"x4" Brick 9x18 3 1/2"x7" Plate 9x30 3 1/2"x12" Small 9x9 3 1/2"x3 1/2"	#24mm Bocciaurato 120x120 48"x48" 60x120 24"x48" 60x60 24"x24"



Milk



Stone



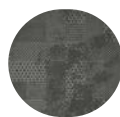
Ash



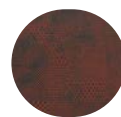
Land



Ink



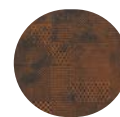
Ink
Texture
Platinum



Ink
Texture
Red



Ink
Texture
Turquoise



Ink
Texture
Flame



Concrete

Design Surround

Concrete, in synergy with Made 2.0, is a flexible ceramic system at the service of living spaces. It is the most complete color / surface combination palette in neutral and natural shades: thirteen colors and four different surfaces that adapt to the different needs of living. The same color can be used from inside to outside, in floors and walls and for the creation of kitchen tops and bathroom furniture while maintaining a strong color consistency. The whole Concrete color palette corresponds to the colors Made 2.0; the White color matches the Made 2.0 White Sand.

Surfaces and sizes



≠4.8mm Mat
 120x120 48"x48"
 60x120 24"x48"
 60x60 24"x24"
 30x60 12"x24"
 30x30 12"x12"
 15x15 6"x6" ◆
 Blend: ◆
 5x60 2"x24"
 10x60 4"x24"
 15x60 6"x24"

≠6mm | Mat
 120x250 48"x100"
 60x250 24"x100"
 120x120 48"x48"
 60x120 24"x48"
 60x60 24"x24"
 30x60 12"x24" ◆

≠4.8mm | ≠6mm
 Small hexagon 18x16
 7"x6"
 Large hexagon 36x31
 14"x12"
 Diamond 18x31 7"x12"
 Small pentagon 17x10
 7"x4"
 Brick 9x18 3 1/2"x7"
 Plate 9x30 3 1/2"x12"
 Small 9x9 3 1/2"x3 1/2"

Mosaic mix 1.5x1.5
 30x30 12"x12"
 Action Mosaic 4.4x5.2
 30x30 12"x12" Ice, Rope,
 Graphite, Grey, White
 Stripes Mosaic 1.5x60
 6"x24"

Stripes Mosaic
 1.5x120 6"x48"

≠12mm | Mat
 120x250 48"x100"
 120x120 48"x48"
 60x120 24"x48"
 60x60 24"x24"
 30x60 12"x24"
 15x15 6"x6"

Blend:
 5x60 2"x24"
 10x60 4"x24"
 15x60 6"x24"

≠12mm | Soft
 120x120 48"x48"
 60x120 24"x48"

≠12mm | full body
 120x250 48"x100" -
 White, Graphite, Grey,
 Rope, Mud

≠24mm
 120x120 48"x48"
 60x120 24"x48"
 60x60 24"x24"



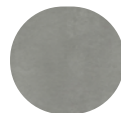
Pure



Ice



Rope



Grey



Iron



Smoke



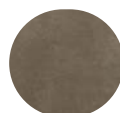
Black



Graphite



Brown



Mud



Beige



Dust



White

Notes:

Available size 120x250 rectified / unrectified through body or rectified multilayer in colours: **Rope / Grey / Graphite / Mud / White.**

The colours **Pure** and **Black** are available in through body ≠6 mm only in the following sizes: 120x250, 120x120, 60x120, 60x60, 30x60 Gigacer Service, Mosaic 30x30, Stripes Mosaic and all PlayOne Shapes.

Action Mosaic is available in the following colours: **Ice, Rope, Grey, Graphite, White.**



Concrete Signs

Concrete is an adaptable ceramics system inspired by the minimalist architecture of bare concrete surfaces. With its new Signs decoration the Concrete range is extending to include a sophisticated, stylish product. Four delicate weaves enrich the original material's aesthetic and decorative value.

Each of the four decorations has been designed to give the spaces you live in a pronounced expressive identity.

Leaves – an immersive nature-inspired decoration for gentle, delicate-effect spaces;

Buds – a light botanical motif for dreamy and welcoming atmospheres;

Cubes – a geometric pattern with a balanced mood for vintage and contemporary-inspired creations;

Essential – versatile decorations to add a touch of character to all contexts.

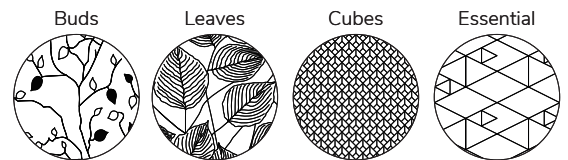


Surfaces and sizes

≠4.8mm | Mat
60x120 24"x48"

≠6mm | Mat
120x250 48"x100"

Textures





Elementa

The evolution of stone through past, present and future. The aesthetic of the new Elementa line celebrates the unpredictable beauty of nature, reinventing the signs of the past with the help of technology.

A material that evolves, forever transforming itself into something unique and inimitable, Elementa perfectly fuses the technicity and performance typical of Gigacer porcelain stoneware and the precision of researched and carefully considered digital design that perfects and enriches the product.

The elegant and enveloping material that is Elementa conveys naturalness, welcoming warmth and a sense of relaxation.

Surfaces and sizes

#6mm Mat
 120x250 48"x100"
 120x120 48"x48"
 60x120 24"x48"
 60x60 24"x24"
 30x60 12"x24"
 Chevron 63,5x11,5 25"x4,5"
 Small Hexagon 18x16 7"x6"
 Large Hexagon 36x31 14"x12"
 Diamond 18x31 7"x12"
 Mosaic 1.5x1.5 30x30 12"x12"
 Mosaic chevron 30x30 12"x12"

#6mm Soft
 120x250 48"x100"
 120x120 48"x48"
 60x120 24"x48"
 60x60 24"x24"
 30x60 12"x24" ♦
 Chevron 63,5x11,5 25"x4,5"

#12mm Mat
 120x120 48"x48"
 60x120 24"x48"
 60x60 24"x24"

#20mm Bocciardato
 60x120 24"x48"



Ivory
Stone



Warm
Stone



Cool
Stone



Gatsby

Style, refinement and versatility for the new “Gatsby” line. Small sparks with a vibrant and dynamic effect elegantly feature the surface, giving life to a modern and refined geometric pattern. The signs in relief on the material surface create a texture with endless stylistic and semantic values, transforming an apparently simple product into a perfect mix of decorative style, contemporary appeal and timeless elegance. The deep and diversified chromatic range generates new vibrations of shape and color, becoming a passe-partout to create infinite combinations.

Surfaces and sizes

#6mm
120x250 48"x100"
120x120 48"x48"
60x120 24"x48"



Jazz



Green Light



Long Island



Old Yellow



Charleston



Inclusioni Classico

Inspired by the force of the nature, Inclusioni is an encounter between contemporary aesthetics and timeless elegance. In the Classico collection, new shades with a strong visual impact model and condition the surfaces. The timeless expressiveness of color meets the potential of the deep and material thickness, overflowing with perspectives and meanings: the full-body ceramic confirms its versatility, paving the way for multiple applications. Between vintage accents and classical references, Inclusioni Classico's eclectic character adapts to different styles of interior design, fitting with elegance and personality into modern and contemporary settings, to whom it lends a timeless and refined elegance.

Surfaces and sizes

≠12mm Mat | ≠12mm Levigato
120x120 48"x48"
60x120 24"x48"
60x60 24"x24"

≠12mm Mat full body | ≠12mm Levigato full body
120x250 48"x100" - Avorio, Nero, Rosso



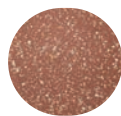
Avorio



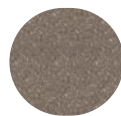
Ocra



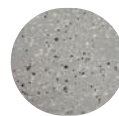
Ambra



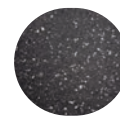
Rosso



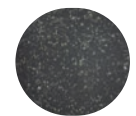
Terra



Grigio



Nero



Nero Giada



Inclusioni Soave

Inspired by the force of the nature, Inclusioni blends the intensity of color and the poetry of shape creating endless creative possibilities. Surfaces are authentically material and refined: porcelain stoneware flakes produced under the skilful control of our laboratory technicians are deposited on the surface and incorporated; the result is a tangible and three-dimensional effect.

Surfaces and sizes

#12mm Bocciardato | #12mm Mat | #12mm Soft
120x120 48"x48"
60x120 24"x48"
60x60 24"x24"
30x60 12"x24" ◆

#24mm Bocciardato
120x120 48"x48"
60x120 24"x48"
60x60 24"x24"



Bianco
Perla Soave



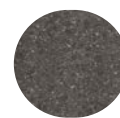
Ecrù
Soave



Tabacco
Soave



Cenere
Soave



Vulcano
Soave



Krea

The material takes its form in the colour, exalting itself with natural-inspired effects such as nuances of tones and vivid colours of the earth and the rocks. This is Krea, it breathes new air, opening an extra space to the creativity with the use of the colour. Environments that are enriched with a variegated and monochromatic vibration, which plays with the material of the surface, interpreting the cement and resin effect in a new and more surprising way, while retaining all the functionality and benefits of an unglazed porcelain slab.

Krea is a dimension of harmony between an elegant minimalism and a chromatic freedom.

Surfaces and sizes

- ≠4.8mm
- 120x120 48"x48"
- 60x120 24"x48"
- 60x60 24"x24"
- 30x60 12"x24"
- Small hexagon 18x16 7"x6"
- Large hexagon 36x31 14"x12"
- Diamond 18x31 7"x12"
- Small pentagon 17x10 7"x4"
- Brick 9x18 3 1/2"x7"
- Plate 9x30 3 1/2"x12"
- Small 9x9 3 1/2"x3 1/2"
- Mosaic 1.5x1.5 30x30 12"x12"
- Stripes Mosaic 15x60 6"x24"
- Stripes Mosaic 15x120 6"x48"

- ≠6mm
- 120x250 48"x100" Blue, Orange, Green, Snow



Ground



Nut



Silver



Snow



Red



Orange



Green



Blue



LCS 1

Le Corbusier Ceramics
 Glazed porcelain stoneware, glossy, brilliant. Ideal for indoor and outdoor wall coverings.

Surfaces and sizes

#6mm
 30x120 12"x48"



Blanc
3200



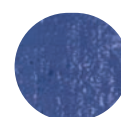
Blanc Ivoire
4320B



Noir d'Ivoire
4320E



Vert 59
4320G



Bleu Outremer 31
32020



Le Rubis
4320M



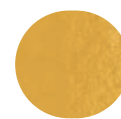
Terre Sienne Brique
32121



Céruléen Vif
32031



Vert 31
32051



Le Jaune Vif
4320W



Light 250

White in architecture

Lightness is our inspiration.

The refined cotton weaving, the subtle transparencies and the soft mat white crystallize in the wall to achieve large, seamless solutions.

Light 250 is available in five formats, all with a single thickness of 6mm and in three surfaces: Curtain, Twill and Piquet

Surfaces and sizes

#6mm

120x250 48"x100"

120x120 48"x48"

60x120 24"x48"

60x60 24"x24"

30x60 12"x24" ◆



Curtain



Piquet



Twill



Light

White in architecture

An innovative system of white porcelain stoneware materials centered on light and on texture: Light. It is light that transforms these five textural surfaces, enhancing their expressive variety.

Light is also the material: light, because this completely white range is composed by a thin thickness of pure white matter.



Surfaces and sizes

- #6mm
- 120x120 48"x48"
- 60x120 24"x48"
- 60x60 24"x24"
- 30x60 12"x24" ◆
- 20x20 8"x8" ◆
- 15x60 6"x24" ◆
- Blend 20x20 8"x8" ◆
- Blend 15x60 6"x24" ◆
- Small hexagon 18x16 7"x6"
- Large hexagon 36x31 14"x12"
- Diamond 18x31 7"x12"
- Small pentagon 17x10 7"x4"
- Brick 9x18 3 1/2"x7"
- Plate 9x30 3 1/2"x12"
- Small 9x9 3 1/2"x3 1/2"
- Mosaic Mix 1.5x1.5 30x30 12"x12"
- Stripes Mosaic 15x120 6"x48"



Crespo



Gesso



Rigato



Roccia



Scolpito



Made 2.0

Made 2.0, in synergy with Concrete, is a flexible ceramic system used for living spaces. It is the most complete color/ surface combination palette in neutral and natural shades: eleven colours and four different surface that could be adapted to the different needs of living. The same colour could be used from the indoor to the outdoor, in floors and covering and for the creation of kitchen tops and bathroom furniture while maintaining a strong chromatic coherence. All the Made 2.0 Palette corresponds to the Concrete colours. The White Sand colour can be combined with the Concrete White.

Surfaces and sizes

#12mm Mat | #12mm
 Levigato | #12mm Bocciardato
 120x250 48"x100" Ice, Rope,
 Iron, Graphite
 120x120 48"x48"
 60x120 24"x48"
 60x60 24"x24"
 30x60 12"x24" ♦
 15x15 6"x6" ♦
 Blend:
 5x60 2"x24"
 10x60 4"x24"
 15x60 6"x24"

#24mm | Bocciardato
 120x120 48"x48"
 60x120 24"x48"
 60x60 24"x24"



Notes:
 All Made 2.0 levigato products are Gigacer Service.



Molitor

Immeuble Molitor is an apartment building designed by Le Corbusier and Pierre Jeanneret and built between 1931 and 1934. Located at the border between the city of Paris and the commune of Boulogne-Billancourt in France, it has been listed along with 16 other architectural works by Le Corbusier as a UNESCO World Heritage Site. The design was constrained by the narrow (12 m) and deep (24 m) configuration of the site and by strict zoning codes, which specified the parapet height, conformance to the existing street wall, and even the placement of the balconies and bow windows. Nevertheless, the architect's inventiveness is evident in the all-glass facades. Identical on both elevations, contemporary to Bernard Bijvoet's Maison de Verre, but Le Corbusier departed from glass-brick-only prototype by the addition of transparent openings. Externally the facades offer a contrast between solid glass bricks and transparent windows, but internally the apartments are flooded with light across the entire wall.

Surfaces and sizes

≠6mm
 120x250 48"x100"
 120x120 48"x48"
 60x120 24"x48"
 60x60 24"x24"

≠12mm
 120x120 48"x48"
 60x120 24"x48"
 60x60 24"x24" ♦



Ombre
Naturelle 31
32140



Ombre
Naturelle
Moyenne
32141



Ombre
Naturelle
Claire
32142



Gris Clair 31
32013



Gris 31
32011



Gris foncé 31
32010



Pointillé

Pointillé is a reinterpretation of the wallpaper designed by Le Corbusier for the Swiss company Salubra, the same one that started the study of the Polychromie Architecturale. Pointillé is faithful to the spirit of the Master and uses contemporary technology to reproduce the surprising effect of the wall color sought by Le Corbusier. It was 1931 when Le Corbusier created the wall covering based on a basic and extemporaneous motif: the "dot", later traced in oil on a solid colour base. This was made to prevent the effect of chromatic contrast fading away over time due to the effect of light. The combination of the colours is strictly taken from the Polychromie Architecturale.

Surfaces and sizes

#6mm
120x250 48"x100"
60x120 24"x48"



Bleu
Outremer 31
32020



Vert
anglais pâle
32042



Blanc
Ivoire
4320B



Quarry

The best choice for nature.

In strict respect for the environment typical of Gigacer, Quarry reinterprets the solid power of six typically European stones in a technical way.

The first stone inspiring us is Quarzite Bianca (white quartzite), the origin of its name and colour. Common in the Alpine foothills, Arenaria (sandstone) is grey in colour shot through with white veins. Gravel Stone brings to mind Cardoso stone with quarries near this Tuscan town. Lava Stone comes from Belgium and is dark. Spain is the origin of Crema Marfil, a homogeneous beige coloured stone. Lastly Golden Stone takes its inspiration from the Solnhofen German fossil stone and is offered in the warm hues of the original material.

Surfaces and sizes

≠6mm | Mat
 120x250 48"x100"
 120x120 48"x48"
 60x120 24"x48"
 60x60 24"x24"
 30x60 12"x24" ◆

≠12mm Mat | ≠12mm
 Bocciardato
 120x120 48"x48"
 60x120 24"x48"
 60x60 24"x24"
 30x60 12"x24" ◆
 30x30 12"x12" ◆

Module: 60x120 - 60x60 - 30x60
 - 30x30 24"x48" - 24"x24" -
 12"x24" 12"x12"

Mosaic Mix 3x3 30x30 12"x12"

≠24mm Mat | ≠24mm
 Bocciardato
 120x120 48"x48"
 60x120 24"x48"
 60x60 24"x24"



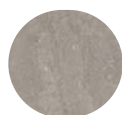
Quarzite
Bianca



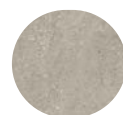
Crema
Marfil



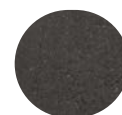
Golden
Stone



Arenaria



Gravel
Stone



Lava
Stone

SUGGESTED LAYOUT: MODULE 2,70 Sqm ◆

Each module, that is composed of 2 pieces of 60x120, 2 pieces of 60x60, 2 pieces of 30x60 and 2 pieces of 30x30, is packed in a single box.

Notes:

Available thickness ≠6 mm in the following colours: Quarzite Bianca / Gravel Stone / Crema Marfil / Lava Stone.



Tele

Creative decors

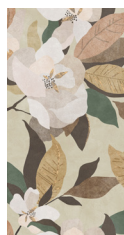
Geometries with a vintage charm and harmonious natural inspirations. A new line with an artistic spirit and extraordinary expressiveness, able to combine aesthetics and function. Thanks to the eloquence of the decorations, the new "Tele" slabs allow to create settings with a strong connotation, as unique as works of art. Eclectic and versatile, "Tele" completes and enriches the Gigacer range and can be easily combined with products with more neutral colours, paving the way for countless stylistic and compositional solutions.

Surfaces and sizes

≠4.8mm
60x120 24"x48"



Foresta



Autunno



Primavera



Fiorita



Geometrie
Terra



Geometrie
Cielo



Terra

A product with essential, primitive look which conjures up nature's intrinsic characteristics, its resilience, irregularity and uniqueness. Matter dried by the sun, transformed by natural agents giving it the lived-in look telling of the passage of time and thus replete with memories and evocations.

Terra salina, with its dry, alkaline look, white with greyish hints. Terra calma, in green hues, transmitting mellow and balanced vibrations. Terra arsa, intense and sunburnt, like the Mediterranean's warm soil. Terra dolce, with its gentle, pinkish-hued look. These are the four natural, discreet hues used for the Terra colour palette. Four hazy, delicate, chromatically compatible colours which enable you to create unique and original compositions, and a decoration - Terra mista - whose dense weave is made up of overlapping bands of colour, like stratified earth bleached by the power of the elements.

Surfaces and sizes

≠6mm Mat | ≠6mm Lucidato
 120x250 48"x100"
 120x120 48"x48"
 60x120 24"x48"
 60x60 24"x24"

≠12mm Mat
 120x120 48"x48"
 60x120 24"x48"
 60x60 24"x24"



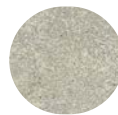
Arsa



Dolce



Calma



Salina



Mista

Notes:

Terra Mista is not available in 24"x24" / 60x60 cm size.